

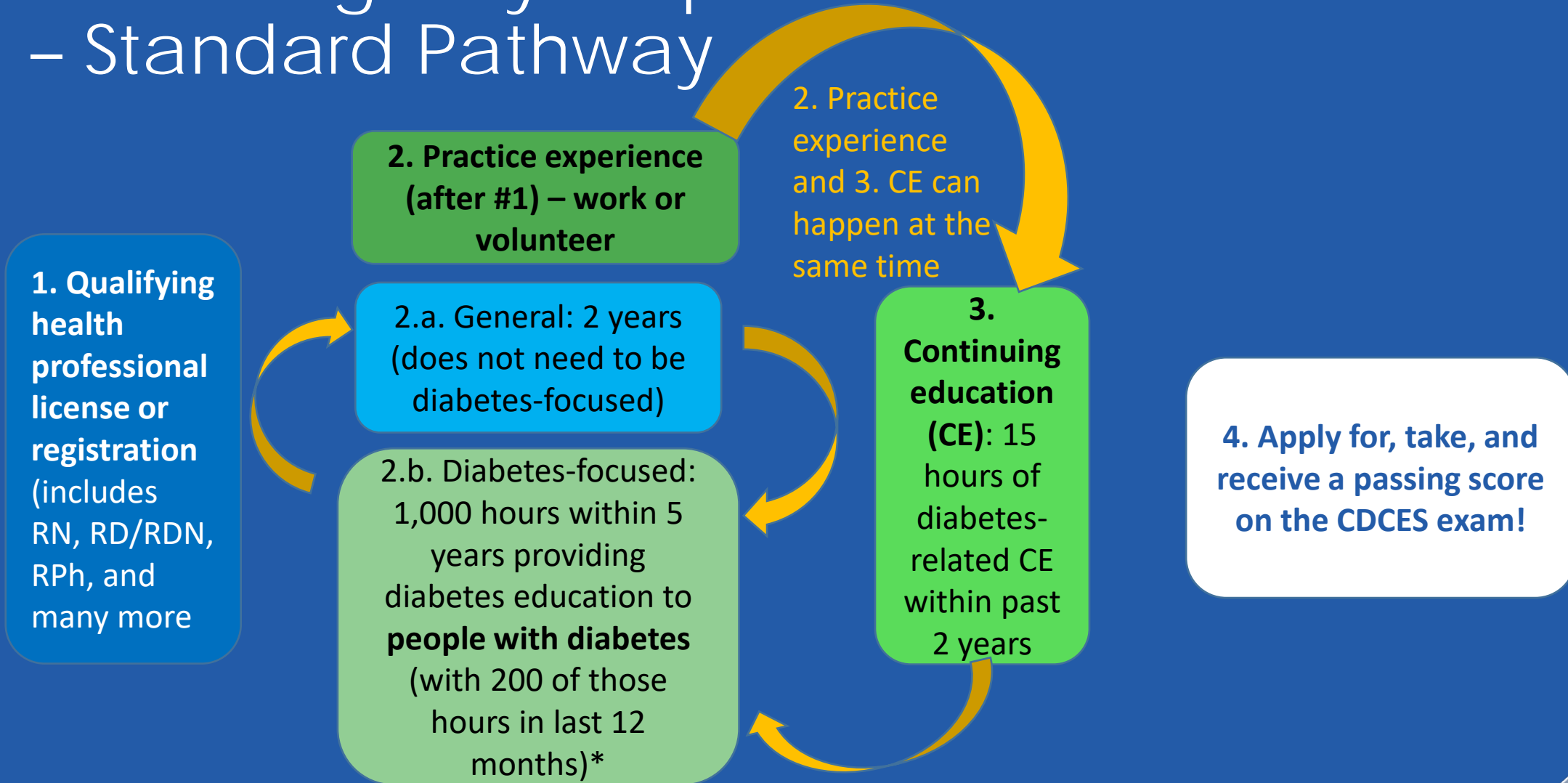


Ambassador Orientation Initial CDCES[®] Certification Eligibility Requirements

(last updated Sept 2024)



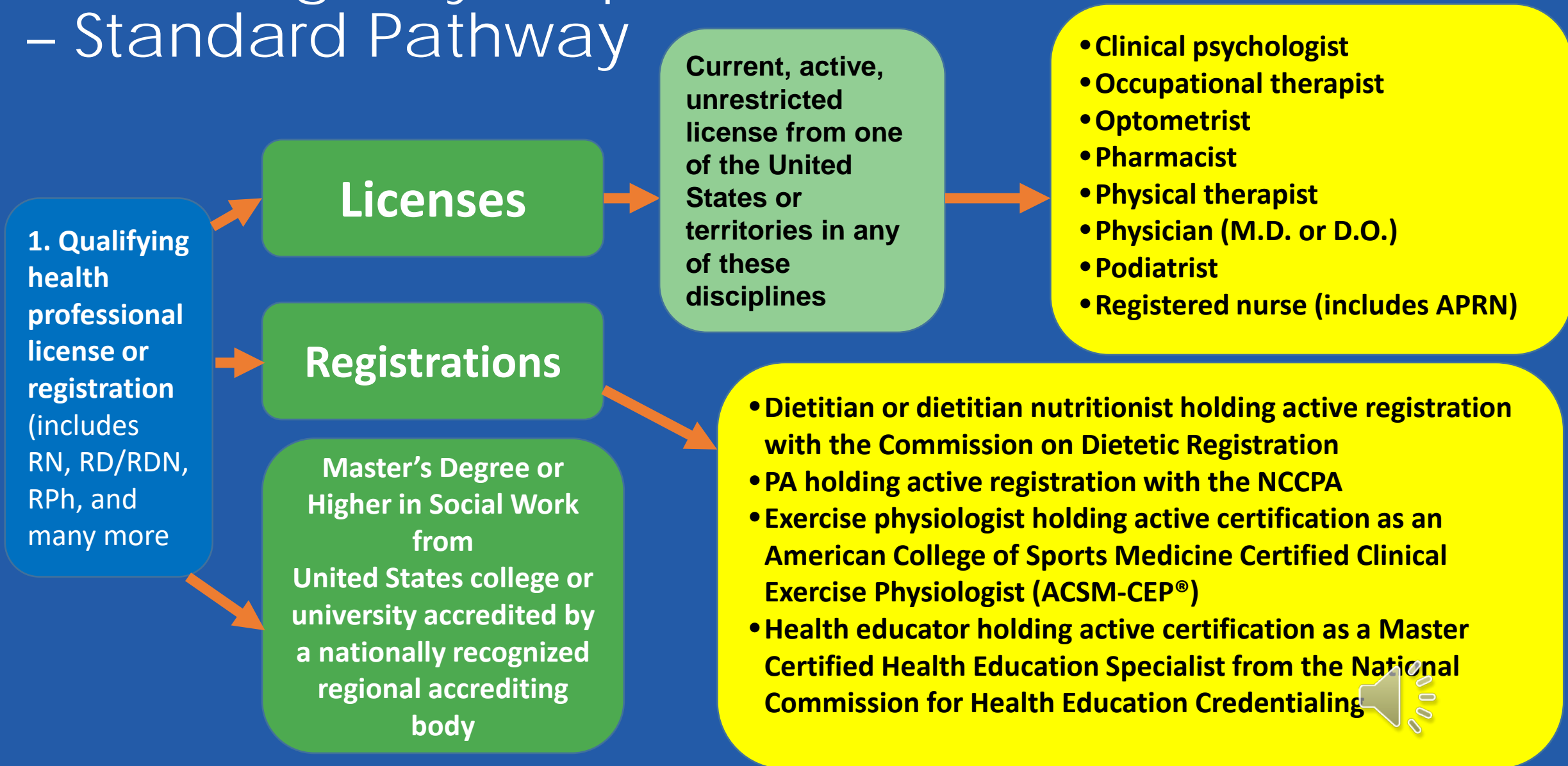
CDCES Eligibility Requirements – Standard Pathway



Both 2.a. yearly and 2.b. hourly requirements can, BUT don't have to be done at the same time

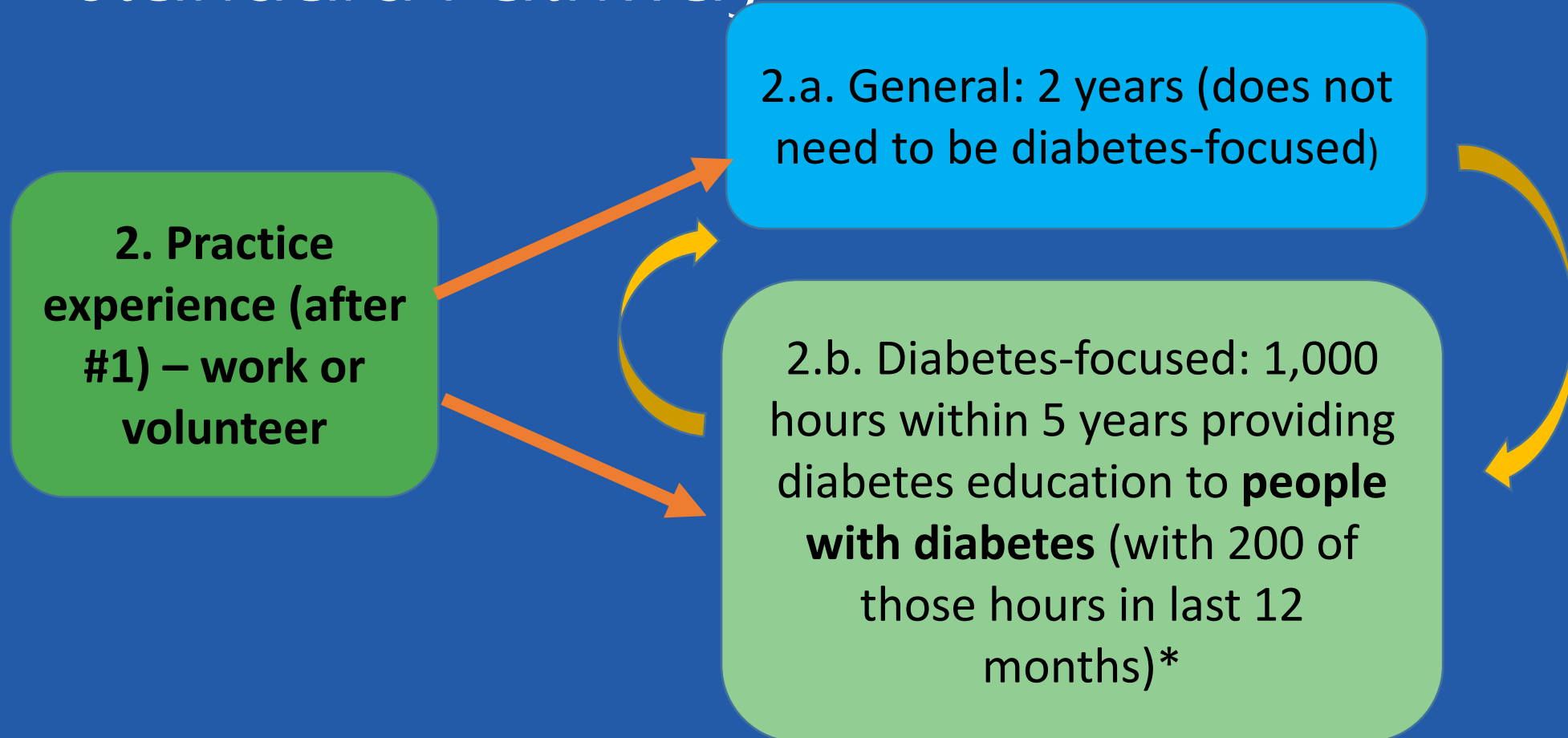


CDCES Eligibility Requirements – Standard Pathway



CDCES Eligibility Requirements

– Standard Pathway



Both 2.a. yearly and 2.b. hourly requirements can, BUT don't have to, be done at the same time 

Diabetes Care & Education Practice Hours

- Education of people with diabetes (prediabetes), not health care professionals/providers
- Paid and volunteer hours are allowed
- Refer to FAQs slides later in presentation

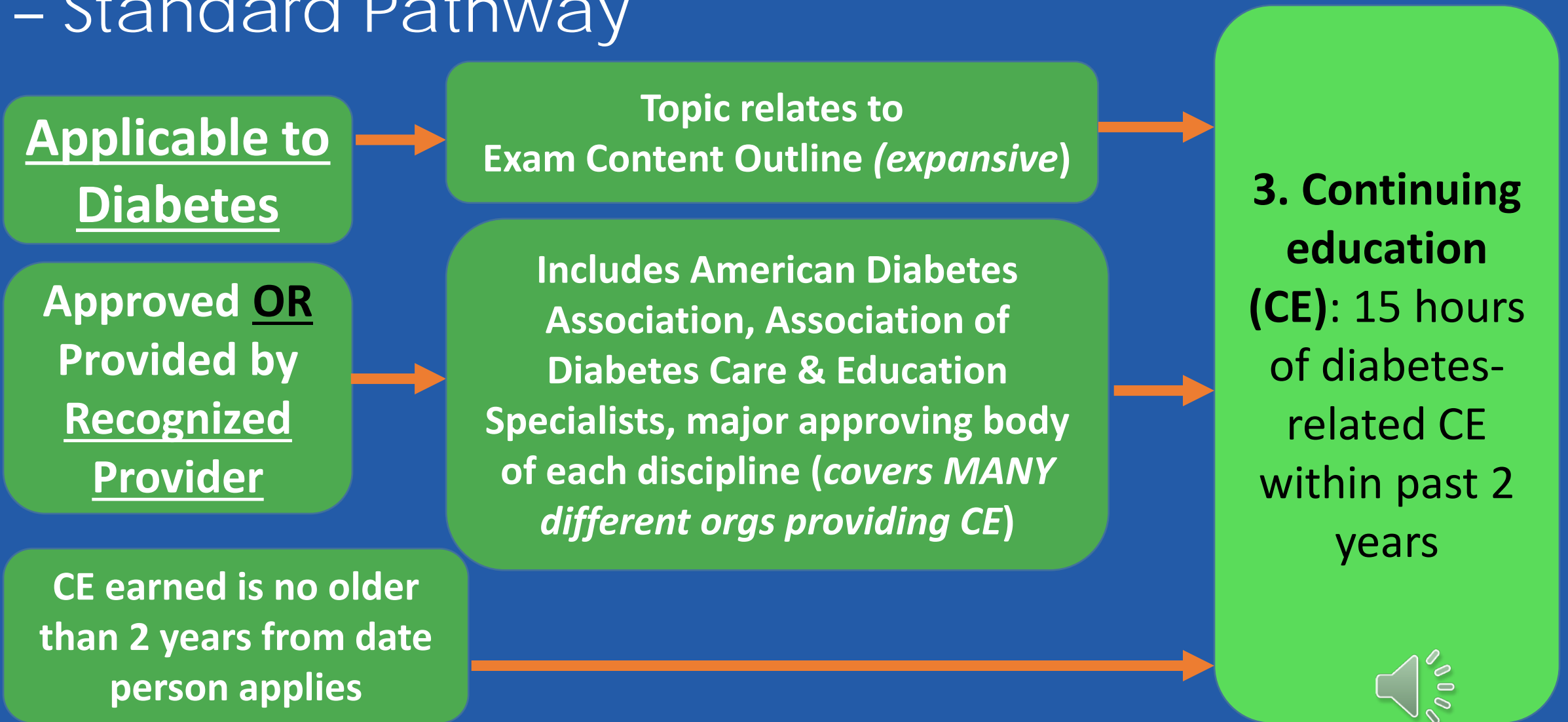


Mentorship Program

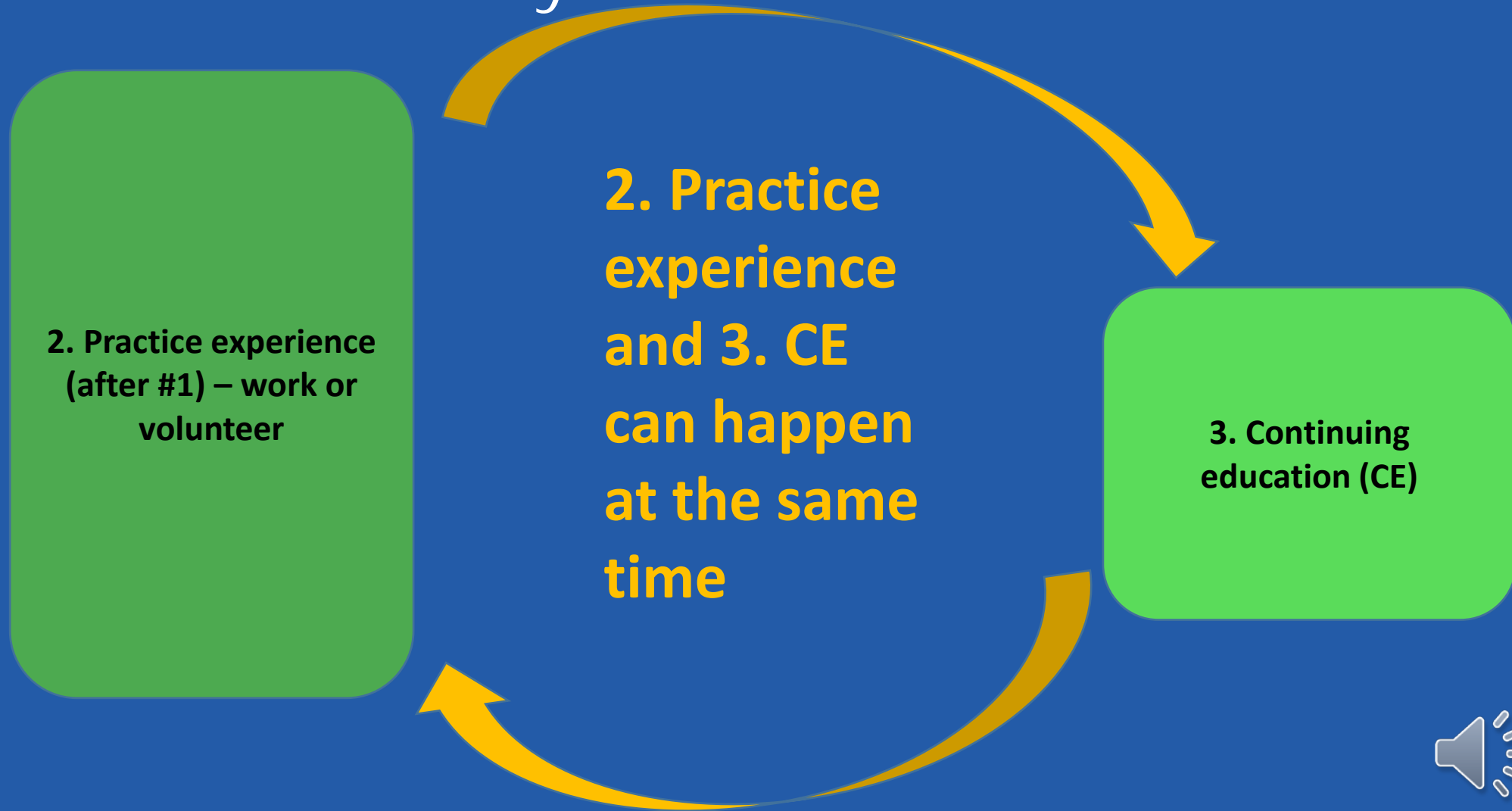
- Optional mentorship program partners experienced CDCESs with health professionals who are interested in gaining experience in providing diabetes education.
- Helps the individuals accrue experience in order to meet the practice requirement to sit for the CDCES exam.
- CDCESs volunteer as mentors – provide avenue for the mentee to accrue hours providing DSMES to people with diabetes
- As partnerships are completed, mentors can accrue equivalent CEs towards renewal by CE requirements
- [Learn more on the cbdce.org site](http://cbdce.org)



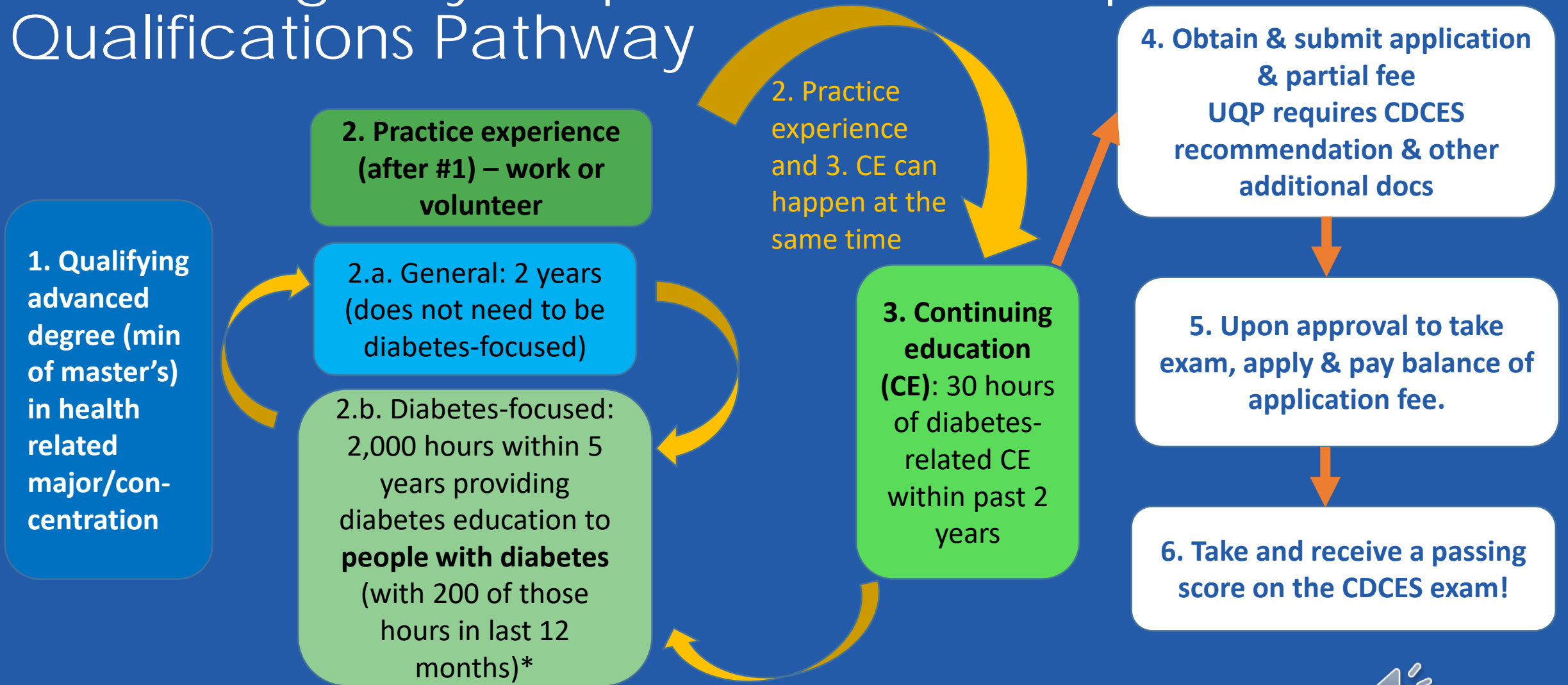
CDCES Eligibility Requirements – Standard Pathway



CDCES Eligibility Requirements – Standard Pathway



CDCES Eligibility Requirements – Unique Qualifications Pathway



Both 2.a. yearly and 2.b. hourly requirements can, BUT don't have to be done at the same time



CDCES Eligibility Requirements – Unique Qualifications Pathway

1. Qualifying advanced degree (min of master's) in health related major/concentration
Examples: public health, nutrition, exercise physiology



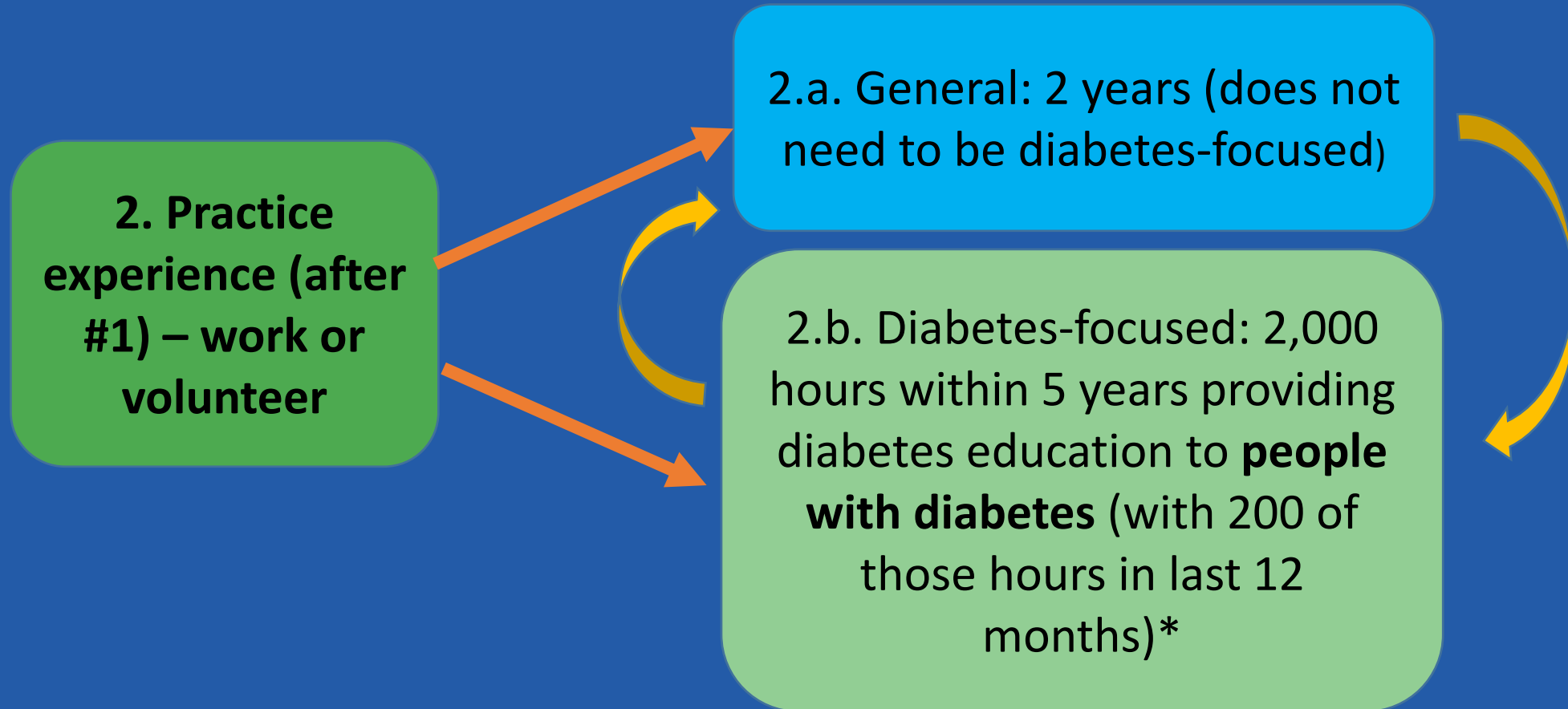
United States college or university that is accredited by a nationally recognized regional accrediting body. The transcript must identify the date the degree was conferred and the major/concentration.

OR

Official independent evaluation verifying equivalency to a minimum of a master's degree in a health-related area/concentration from a United States college or university. *See application for specific requirements.*

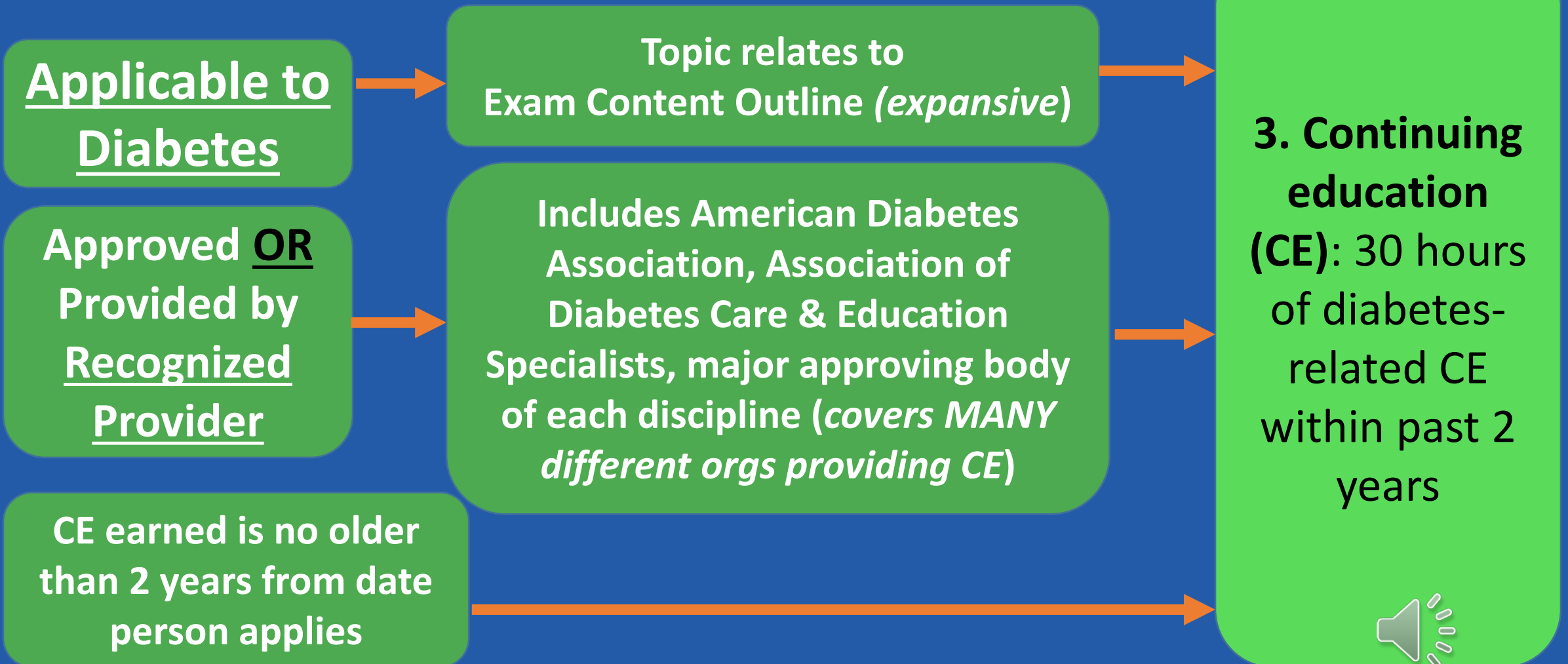


CDCES Eligibility Requirements – Unique Qualifications Pathway

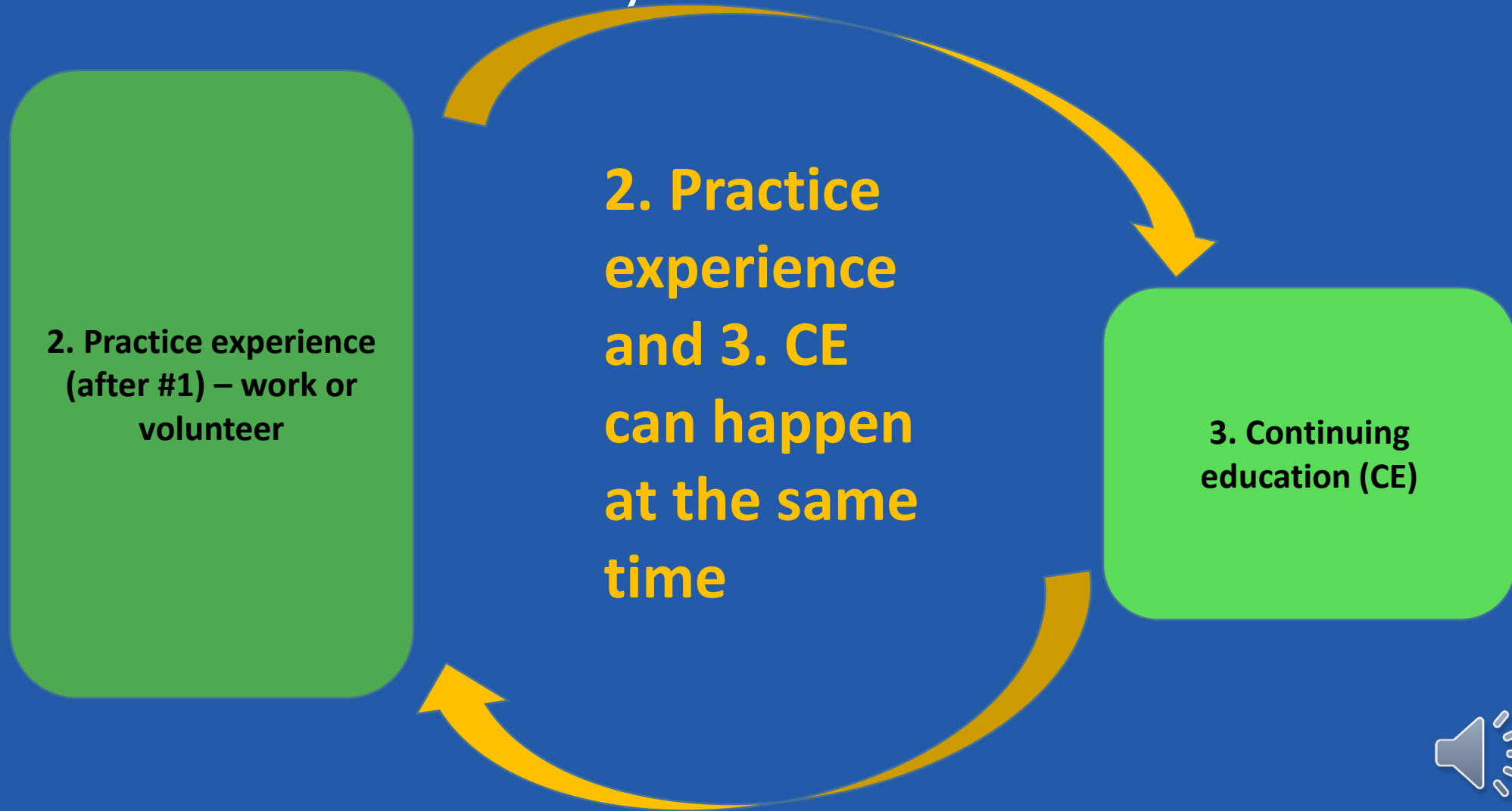


Both 2.a. yearly and 2.b. hourly requirements can, BUT don't have to, be done at the same time 

CDCES Eligibility Requirements – Unique Qualifications Pathway



CDCES Eligibility Requirements - Unique Qualifications Pathway



CDCES Eligibility Requirements – Unique Qualifications Pathway

- *Most common examples: master's degree in exercise physiology, nutrition, public health*
- *Important – **think about person's ultimate goal** - the CDCES credential does not expand the scope of work a person is able to do under their qualifying degree/discipline. Individuals who attain certification via this pathway may encounter challenges in finding positions other than the one they use to qualify for certification. While CBDCE wants individuals to become certified, the organization is not able to devote resources to promoting this pathway to employers or insurers.*



DCE Practice Hours Review



DCE Practice Hours – What Qualifies?

- Diabetes care and education (DCE) involves the person with prediabetes or diabetes and/ or the caregivers and the specialist(s) and is defined as the ongoing process of facilitating the knowledge, skill, and ability necessary for prediabetes and diabetes self-care, as well as activities that assist a person in implementing and sustaining the health practices needed to manage the condition on an ongoing basis, beyond or outside of formal self-management training. It is a component of a comprehensive plan of diabetes care. The process incorporates the needs, goals and life experiences of the person with prediabetes or diabetes and is guided by evidence-based standards. DCE should include practical problem-solving approaches and collaborative care, address psychosocial issues, lifestyle change, and strategies to sustain self-management.



DCE Practice Hours – What Qualifies?

- For purposes of certification eligibility, some or all of the following components of the DCE process may be performed and counted towards meeting the DCE practice experience requirement:
 - Assessment: The participant's DCE needs are identified. This process is led by the participant with assessment and support of the educator.
 - Education and Care Plan: The participant's individualized education and care plan is developed. The plan reflects the participant's self-management goals and current evidence and practice guidelines and includes criteria for evaluating outcomes.
 - Interventions: The specialist delivers intervention options to assist the participant in meeting self-management goals.



DCE Practice Hours – What Qualifies?

- Components continued...
 - Ongoing Support: The specialist provides options for ongoing support and resources. The support option(s) is selected by the participant to best meet their self-management goals.
 - Participant Progress: The specialist will monitor and communicate whether the participant is achieving their self-management goals and other outcome(s) to evaluate effectiveness of interventions. Additional assessments are based on the participant's needs across the lifespan.
 - Documentation: The specialist documents the assessment, education plan, intervention, and outcomes in the participant's health record.
 - Services Development/Administration: Development and administrative activities performed as part of DSMES services.



DCE Practice Hours – What Qualifies?

- For purposes of certification eligibility, some or all of the DSMES components of the DCE process may be performed and counted towards meeting the DCE practice experience requirement.
- However, regardless of discipline and practice experience, one should have the knowledge and the ability to apply that knowledge across all areas of the Exam Content Outline



DCE Practice Hours – What Qualifies?

- Review the Exam Handbook for specific information on which activities are considered DCE.
- You've reviewed the current definition of DCE, but you are still not sure about your experience and if it counts towards the DCE practice requirement for initial certification.
- What do you do next?
- The CBDCE national office staff cannot assess whether a health care professional is doing DCE.
- Review your work responsibilities - the work that you do that falls within the definition of DCE can be claimed as DCE hours. We also suggest that you review the examples of experience that are not considered DCE and also have a conversation with your supervisor in regards to the definition. In talking with your supervisor, you two can agree on what experience can be counted and also agree on how you'll track that information.



DCE Practice Hours – What Does NOT Qualify?

While not an exhaustive list, the following are examples of activities that do not qualify:

- Occupational Activities
 - demonstrating a basic skill in which the health professional is not providing DCE
 - providing medical assessment or diagnosis
 - conducting/participating in research activities in which the health professional is not providing DCE
 - dispensing/prescribing medications
 - promoting sales of diabetes medications, supplies, and products
- Professional Activities
 - providing continuing education to professionals (e.g., teaching nurses, physicians)
 - membership or committee work in professional organizations
- Personal Activities
 - having diabetes or caring for a family member with diabetes
 - diabetes-related volunteer activities that do not include some or all of the components of DCE



DCE Practice Hours - Tracking

- No specific way to track hours required
 - Candidates want method for themselves, so know when hit the minimum needed.
 - If chosen for audit (random), need proof of all requirements. For practice hours, forms filled out by you and verified by supervisor(s).
 - Ask supervisor what THEY need to verify practice hours if chosen for audit.





Thank you for reviewing:

Ambassador Orientation – Initial CDCES® Certification Eligibility Requirements

Please scan the QR code or use the link below to complete the quiz about this presentation:

<https://form.jotform.com/242683984720163>

